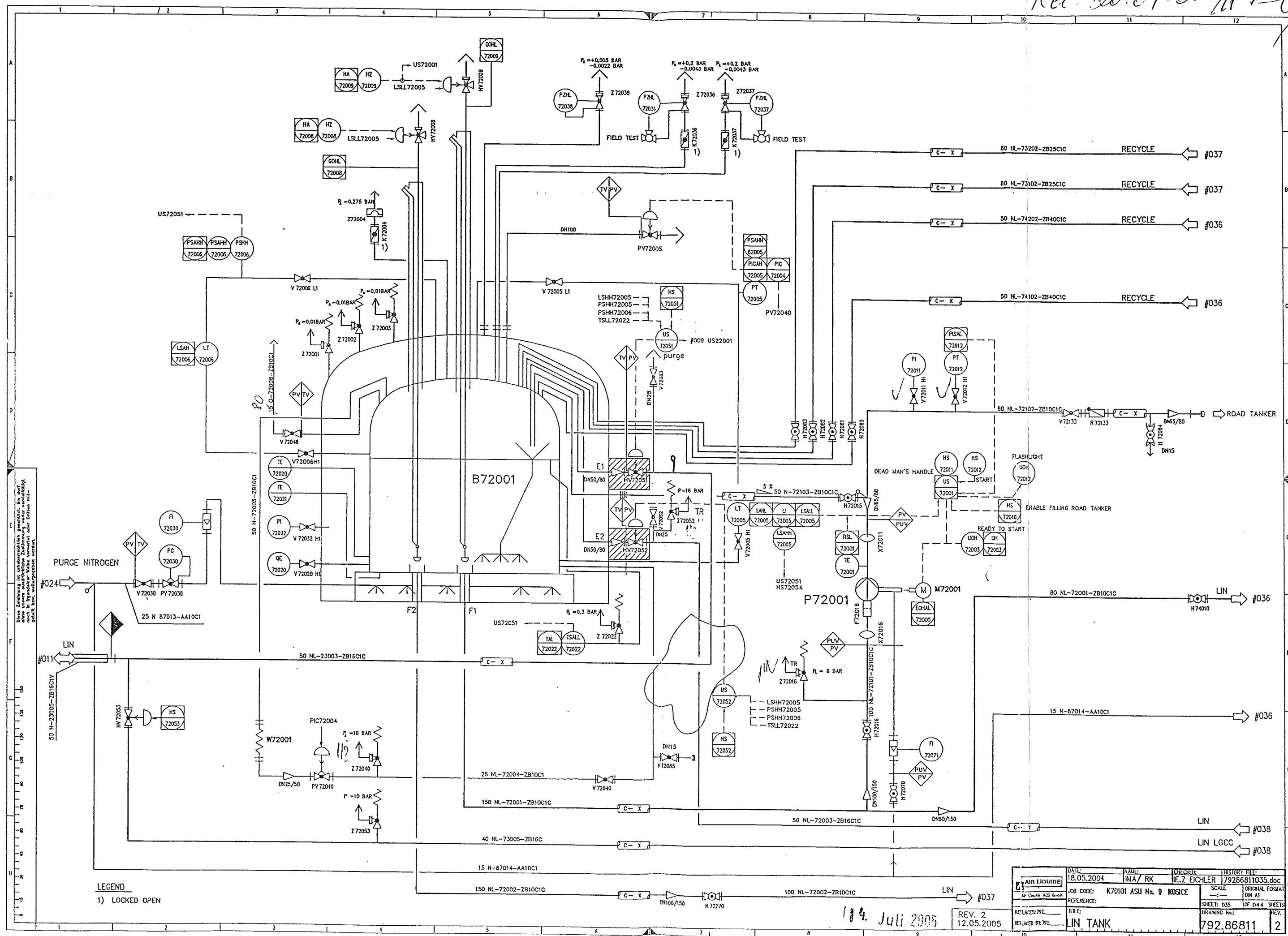



Kec. No. 07-05 M 1-2

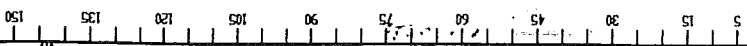


104. Juli 2005

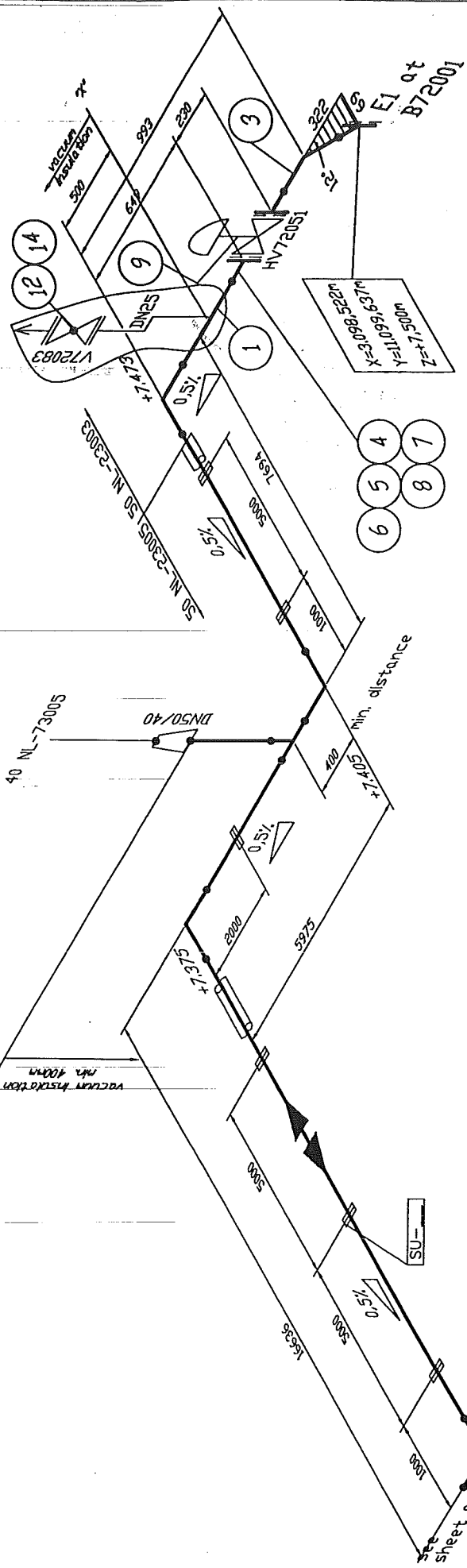
REV. 2
12.05.2005

 AIR LIQUIDE Air Liquide AG Essen	DATE:	NAME:	DESIGNER:	INSTRUMENT FILE:
	18.05.2004	IMA / RK	HE.Z. FICHLER	792868611035.doc
JOB CODE:	K70101 ASU Na. 9		SCALE:	ORIGINAL FORMAT
REFERENCE:			—	DN A1
TITLE:			SHEET: 035	OF 044 SHEETS
RE LATES 792			DRAWING No.:	REV.
REDUCED BY 792	LIN TASK		792.86861	2

This drawing is protected by copyright.
It may not be copied or used without our written
authorization and it is strictly prohibited
to disclose it to any third parties.



rec. 100000 X FY



Remarks:

- Responsibility of the assembling company:
- Situation of mounting seams
- Situation of pass-lengths
- Check of measure details and pipe courses on the construction site
- Situation of the spindle at valve

Accompanying drawings:

- 50 NL-23005 Sheet 01

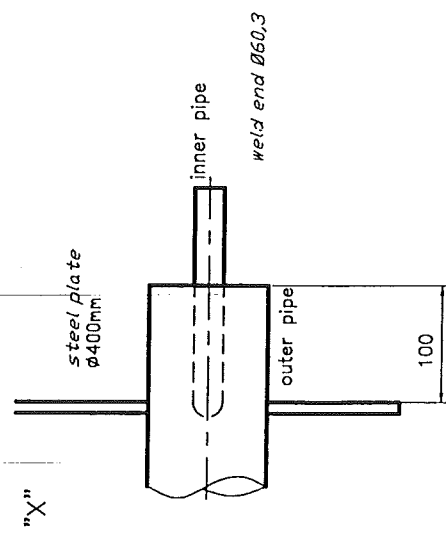
Accompanying lists:

- 50 NL-23005 ZB16C1CV

Pipe Length: 31m

vacuum insulation

AIR LIQUIDE		Date: 17.02.2005	Name: Reid./IES	Checked: Hr. Gans	History file: 792-----doc
Air Liquide ACS GmbH		Job code: K70101		Scale: ---:---	
Replaces: 79-----		Reference: ASU Kosić		Original format: DIN A3	
Replaced by: 79-----		Title: 50 NL-23005		Sheet: 002 of 002	
		Drawing No.: 792.87106		Rev. C	




AS BUILT

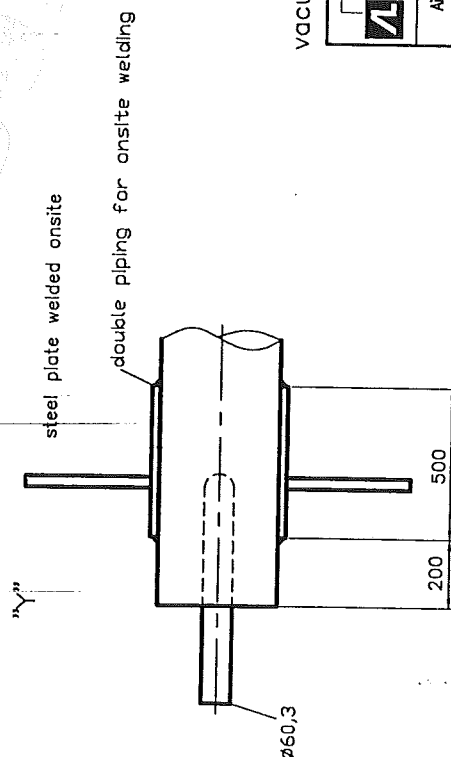
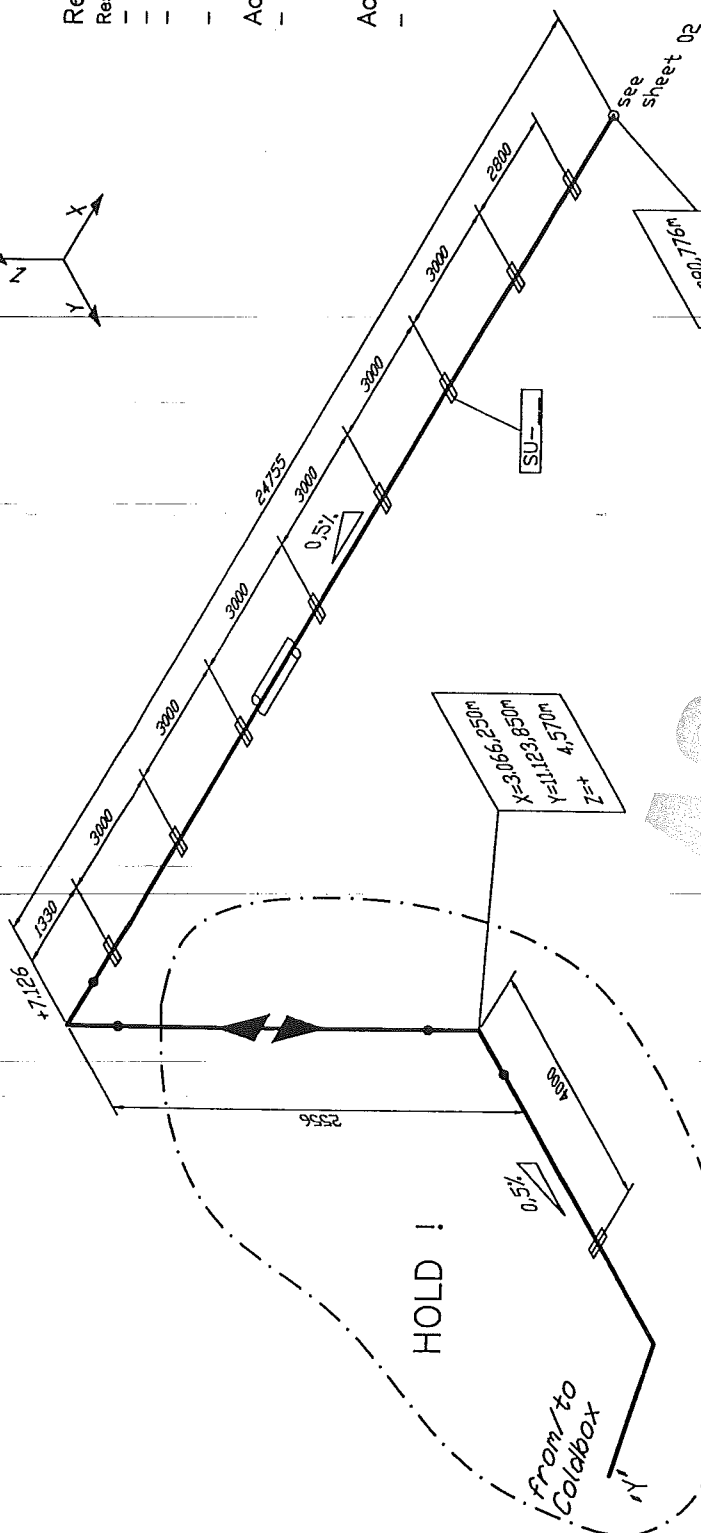
- Responsibility of the assembling company:
- Situation of mounting seams
- Situation of pass-lengths
- Check of measure details and pipe courses on the construction site
- Situation of the spindle at valve

Accompanying drawings:
- 50 NL-23005 Sheet 02

Accompanying lists:
- 50 NL-23005 ZB16C1CV

Pipe Length: 43m

vacuum insulation		 AIR LIQUIDE		Date : 17.02.2005		Name : Reid./IES		Checked: Hr. Gans		History file: 792-----.doc	
				Job code: K70101				Scale -----		Original format DIN A3	
		Air Liquide AGS GmbH		Reference: ASU Kosice				Sheet: 001		of 002 Sheets	
				Title:				Drawing No.:		Rev.	
				50 NL-23005				792.87106		C	
				Replaces: 79-----							
				Replaced by: 79-----							



This drawing is protected by copyright.
It may not be copied or used without our written
authorization and it is strictly prohibited
to disclose it to any third parties.

Made by : Ing. Supak
Date : 11.10.2005
revision : 0

VAM Anlagentechnik und Montagen
01 - 5 - 6801 - 01 KOSICE AIR LIQUIDE TANKFARM - AS BUILT
Line Number : 50 NL-23005 ZB16C1

	Weight (kg)
pipe mat.:	15,67
con. valves	38,20
man. valves:	6,20
pr. supports:	-
sek. supports	-
summe:	60,07

AS BUILT

Stückliste 01 50 NL-23005 ZB16C1 Revision: C

Teilenummer	NW1	NW2	Teilebezeichnung	Einzelgew.	Menge	EP-Lieferung	EP-Montage	gesamt	Stunden ges.
-------------	-----	-----	------------------	------------	-------	--------------	------------	--------	--------------

FEHLER diese Liste bitte nur mit Menu 1 sortiert nach BG - Leitung - Rokls verwenden

ELBOW18	50	2	ELBOW 12°, TYPE3 1.4541 DIN 2605-1 60,3x2	0,05 kg	1,00				
FLANGE5	25	0	Welding neck flange 1.4541 DIN EN 1092-1	1,00 kg	2,00				
FLANGE9	50	0	WELDING NECK FLANGE 1.4541 DIN EN 1092-1	2,53 kg	3,00				
GASKET8	50	2	GASKET Graphite w. CrNi-Inlay DIN EN 1514-1 107x2,0x61x		2,00				
HEXNUT4	16	0	HEXAGON HEAD NUT A2-70 DIN EN ISO 4032	0,03 kg	8,00				
NUT5	12	0	Hexagon nut A4-70 DIN EN ISO 4032	0,02 kg	8,00				
PIPE12	50	2	PIPE 1.4541 DIN EN ISO 1127 60,3x2	2,92 kg	1,00				
PIPE2	25	2	Pipe, welded 1.4541 DIN EN ISO 1127 33,7x2	1,58 kg	0,30				
SCREW6	12	0	Hexagon head screw A2-70 DIN EN ISO 4014 65	0,14 kg	8,00				
SCREW8	16	00	HEXAGON HEAD SCREW A4-70 DIN EN ISO 4014 70	0,14 kg	8,00				
WASH1	13	0	Washer B A2-70		8,00				
WASH3	17	0	WASHER B A2-70		8,00				

Stückliste 01 50 NL-23005 ZB16C1 Revision: C

(Fortsetzung)

Teilenummer	NW1	NW2	Teilebezeichnung	Einzelgew.	Menge	EP-Lieferung	EP-Montage	gesamt	Stunden ges.
-------------	-----	-----	------------------	------------	-------	--------------	------------	--------	--------------

FEHLER diese Liste bitte nur mit Menu 1 sortiert nach BG - Leitung - Rokits verwenden

Summe: 01 50 NL-23005 ZB16C1	15,67 kg								
------------------------------	----------	--	--	--	--	--	--	--	--

Liefersumme:	
Montagesumme:	
Gesamtsumme:	
Gesamt-Stunden:	
Gesamtgewicht:	15,67 kg
** Ende der Ausgabe	

AS BUILT

Stückliste 01 50 NL-23005 CON VAL BY AL Revision:

Teilenummer	NW/1	NW/2	Teilebezeichnung	Einzelgew.	Menge	EP-Lieferung	EP-Montage	gesamt	Stunden ges.
-------------	------	------	------------------	------------	-------	--------------	------------	--------	--------------

FEHLER diese Liste bitte nur mit Menu 1 sortiert nach BG - Leitung - Rokis verwenden

CHV72051	50	0	CONTROL VALVE; HV72051 assembling only	38,20 kg	1,00				
Summe: 01 50 NL-23005 CON VAL BY AL				38,20 kg					

Liefersumme:

Montagesumme:

Gesamtsumme:

Gesamt-Stunden:

Gesamtgewicht: 38,20 kg

** Ende der Ausgabe

Stückliste 01 50 NL-23005 MAN VAL BY AL Revision: C									
Teilenummer	NW1	NW2	Teilebezeichnung	Einzelgew.	Menge	EP-Lieferung	EP-Montage	gesamt	Stunden ges.
FEHLER diese Liste bitte nur mit Menu 1 sortiert nach BG - Leitung - Rokls verwenden									

VV72083	25	0	VALVE V72083 by AL-AGS	6,20 kg	1,00				
Summe: 01 50 NL-23005 MAN VAL BY AL				6,20 kg					

Liefersumme:	
Montagesumme:	
Gesamtsumme:	
Gesamt-Stunden:	
Gesamtgewicht:	6,20 kg
** Ende der Ausgabe	